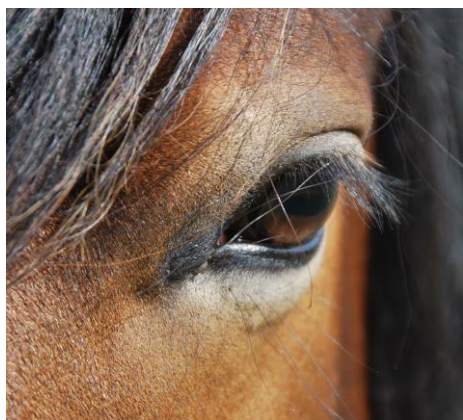


## Intensive Programs for Home-Educated Children



**2Connections EFHD** provides Equine Facilitated Learning (EFL) programs. Our classes bring children together with horses to work through a number of carefully designed experiential learning exercises that focus on key learning objectives, while promoting teamwork in a fun and engaging format. Non-verbal communication, appropriate assertiveness, negotiation skills, team work, creative thinking, leadership, responsibility and confidence are several examples of the skills participants will have the opportunity to develop. No previous horse experience is necessary and no riding is involved, as all exercises are done from the ground.

*“What we learn with pleasure we never forget....” (Alfred Mercier)*

### Autumn Program Options

#### Intensive Sessions 1 & 2

Dates: October 5<sup>th</sup> and 19<sup>th</sup>

Time: 9:00am – 1:00pm

Fee: £137.50 per child for both days

#### Intensive Sessions 3 & 4

Dates: November 2<sup>nd</sup> & 16<sup>th</sup>

Time: 9:00am – 1:00pm

Fee: £137.50 per child for both days

(A 10% discount will be given for siblings)



**Each Intensive Session involves working through 3 EFL exercises, each with a specific learning outcome, reflection & discussion of learning experience and journaling exercises.**

[A course outline with the learning outcomes can be found on our website event page]

#### Each Program Option includes:

- Equine Facilitated Learning sessions focusing on skills development
- Use of horses and all equipment
- Qualified & experienced facilitators
- Refreshments (water, hot chocolate) & light snacks (fruit, plain biscuits)

If you are interested in registering your child for one of our programs or have any questions,  
Please contact us [mail@2connections.co.uk](mailto:mail@2connections.co.uk)

**Our Full Brochure for *Equine Facilitated Learning Programs for Enhancing the Home-Education Experience* can be download from our website event page.**